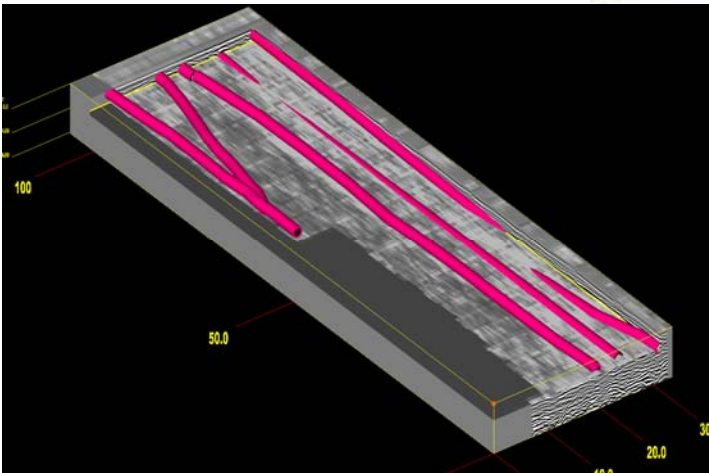
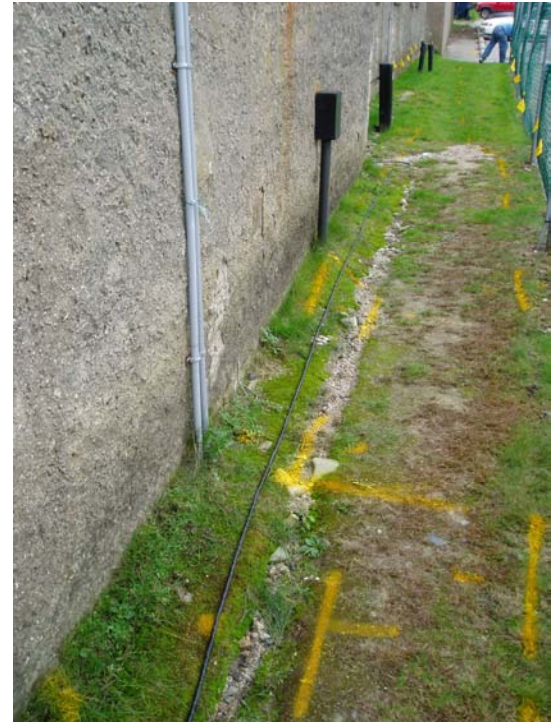


SUBSURFACE IMAGING



Utility Location - Salve Regina University

Salve Regina University in Newport, RI was in the design phase of an addition to historic buildings on campus. Because of the age of the buildings and upgrading of the utilities over the years, there were no reliable plans indicating all of the current utility locations. A comprehensive Ground Penetrating Radar survey was executed over the areas to be disturbed. These areas included lawns, tennis courts, a parking lot, and a brick paved courtyard. Storm sewer, telecommunication and electrical services were successfully located. Outputs of the project included a map overlay of the design drawings detailing utility location and depth.



Key SPECTRA Contacts:

John Ciampa (JCiampa@spectraenv.com)
Director of Geophysical Services
(518) 782-0882 ext: 41

Daniel J. Grasmeyer (DGrasmeyer@spectraenv.com)
Vice President—Marketing and Sales
(518) 782-0882 ext: 52