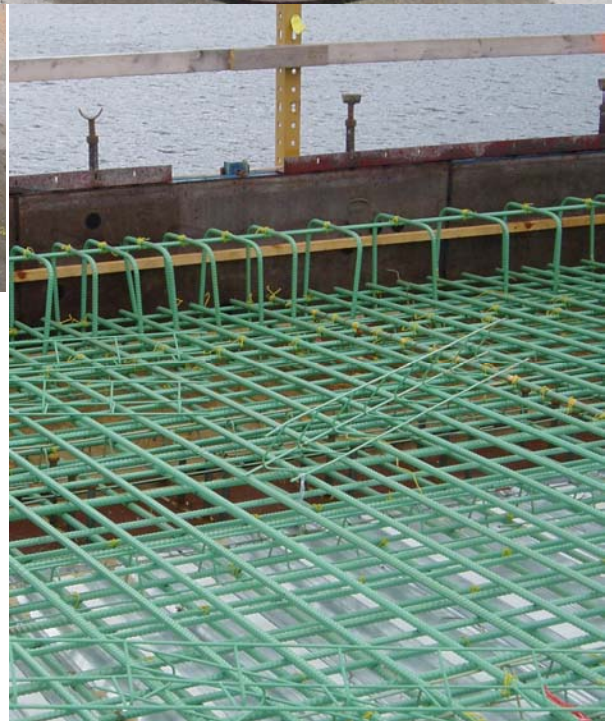


SUBSURFACE IMAGING



Bridge Deck Rebar Location -Atlantic Testing Laboratories

A materials testing company was continually hitting rebar during coring for concrete integrity tests on a new bridge deck in northern Vermont. Using a 1.5 GHz antenna with a hand cart, SPECTRA provided real time field-markout of rebar positions on the bridge deck in advance of the coring crew. This allowed the testing company to safely obtain cores without compromising the integrity of any reinforcement.



Key SPECTRA Contacts:

John Ciampa (JCiampa@spectraenv.com)
Director of Geophysical Services
(518) 782-0882 ext: 41

Daniel J. Grasmeder (DGrasmeder@spectraenv.com)
Vice President—Marketing and Sales
(518) 782-0882 ext: 52